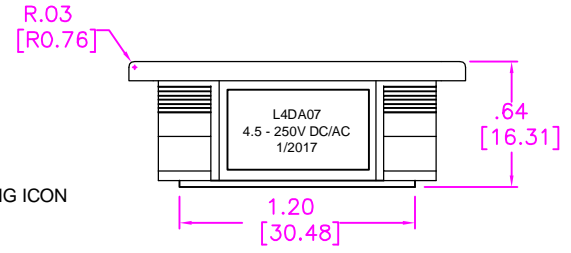
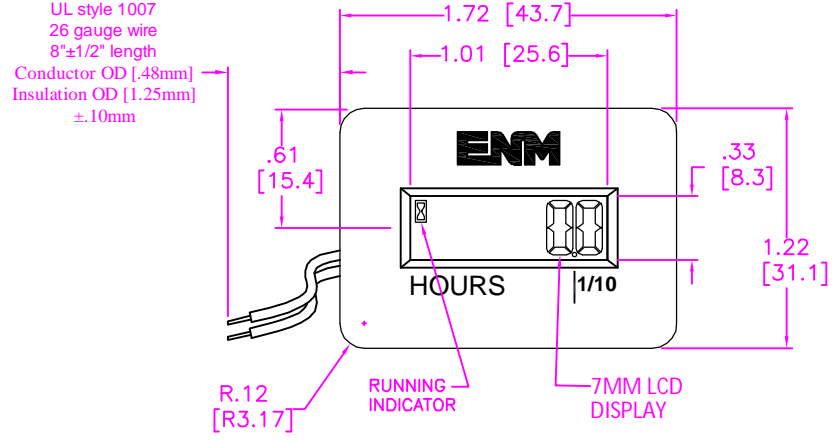
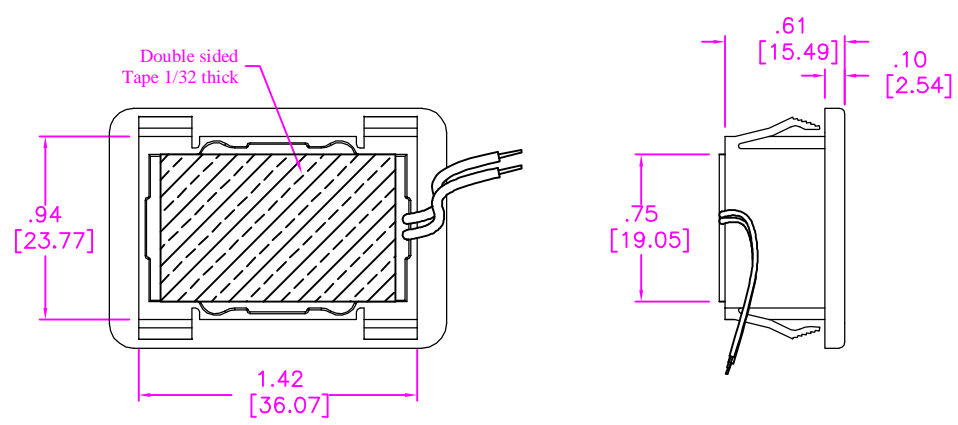


REVISIONS

SYM	DESCRIPTION	DATE	APPROVAL



NOTES:

- 1) RUNNING INDICATOR FLASHES WHEN POWER IS PRESENT.
- 2) COUNTER ADVANCES UPON APPLICATION OF EXTERNAL OPERATING POWER ONLY.
- 3) BATTERY MAINTAIN BOTH, HOURS AND DATA IN MEMORY AND CONTINUES HOURS DISPLAY
- 4) HOUR DATA IN MEMORY IS LOST AT BATTERY END OF LIFE TO BE 5 YEARS MINIMUM

SPECIFICATION

- | | |
|--|--|
| <ol style="list-style-type: none"> 1) DISPLAY 2)DIGIT HEIGHT 3)RESOLUTION 4)DATA STORAGE 5)INPUT DEVICE 6)OPERATION VOLTAGE 7)OPERATION TEMPERATURE: 8)STORAGE TEMPERATURE: 9)HUMIDITY 10)TOTALLY SEALED UNIT: 11)CASE MATERIAL: 12)ROHS COMPLIANCES | <p>99999.9 WITH RUNNING ICON
 DISPLAY ALWAYS ON
 0.276 [7MM]
 0.1 HOURS
 INTERNAL BATTERY
 2-WIRE FOR ENABLE POLARITY INSENSITIVE
 4.5V TO 250VDC/AC 48-440 HZ
 -30°C TO +71°C
 -30°C TO +71°C
 95 %RH
 POTTING METHOD (IP68)
 POLYCARBONATE BLACK (UL94V-2 flammability rating)
 ALL COMPONENTS</p> |
|--|--|

MATERIAL			FINISH			HEAT TREAT		
DIMENSIONAL TOLERANCES UNLESS OTHERWISE SPECIFIED			6 DIGIT 7MM HOUR METER SURFACE MOUNT			WEIGHT		
FRAC.	DEC.	ANG.				<div style="font-size: 2em; font-weight: bold; margin: 0;">ENM</div> <p style="margin: 0;">Chicago, Illinois</p>		
±1/64	.XXX ±.005	±30°						
	.XX ±.01							
SCALE 1.1	NO. REQ.D	DRAWN J.G.	DATE 11-1-17	SIZE A	DRAWING NUMBER S-L4DA07	ISSUE 1		
NEXT ASSY.		CHECKED	DATE	APPROVED	DATE			

THIS PRINT IS THE PROPERTY OF ENM COMPANY AND IS LOANED SUBJECT TO RETURN UPON DEMAND. TITLE TO SAME IS NEVER SOLD OR OF DESIGN OR INVENTION ARE RESERVED. PRINT IS NOT NECESSARILY TO SCALE.