

### Self Powered Engine Digital Tach/Maintenance Hour Meter, PT17 Series



**PT17A0**

#### Features

- Programmable functions and maintenance timer
- No external power required
- Replaceable battery (CR2450)
- Large 7 segments LCD
- Splash proof (IP65)
- Green backlighting
- Resettable

ENM is proud to present the new series PT17 self-powered Digital Tach/Maintenance/Hour meter with replaceable battery. The PT17 keeps track of true engine RPM and running time for all types of gasoline engines.

The unit is powered by an internal lithium battery. No external power connections are required. The operation of the Tach/Hour meter is triggered by ~5.7 ft. shielded and external lead, wrapped around the spark plug wire of the engine. Since the unit is triggered by the spark of the engine, the hours and the RPM display actual operation. This is useful for maintenance and warranty applications for any type of engine-powered machinery.

When the engine is on, the display will read the RPM of the engine. When the engine is off, the display will switch to run time and remains visible.

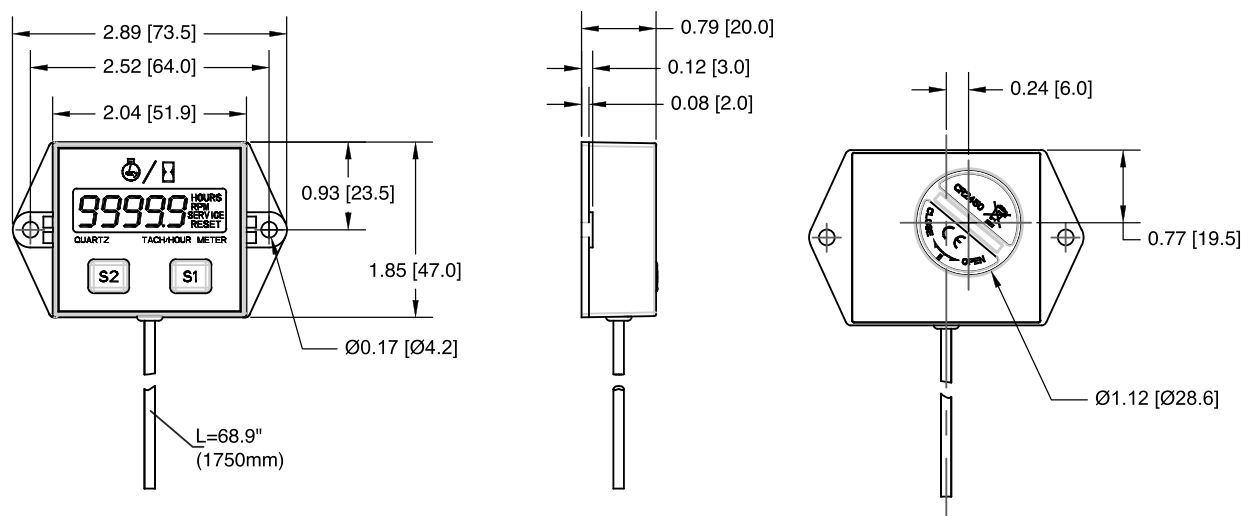
#### Specifications

LCD:	0.5"x1.65" (12.5x42mm)
Capacity:	Hour meter - 9999.9 RPM - 300-30000
RPM Accuracy:	10RPM
Battery Life:	~6 years
Operating Temperature:	Standard -10°C to +60°C
Splash-proof:	IP65
Mounting:	2 holes base mount

### PT17 Series

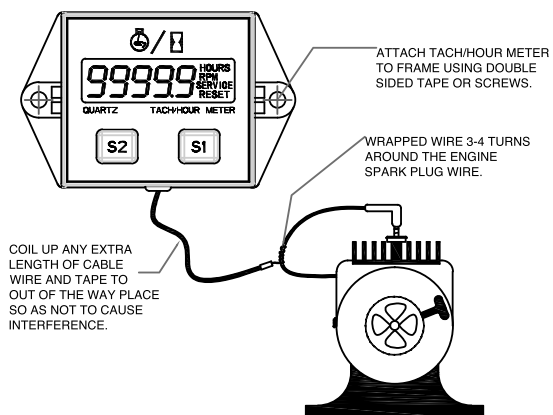
### Series PT17

### Dimensional Data



#### PT17 Firing Pattern:

- 01 - Spark plug fires twice per revolution  
(Typical 4 cylinder 4-stroke/2 cylinder 2 stroke engine)
- 02 - Spark plug fires once per revolution  
(Typical 2 cylinder 4 stroke/single cylinder 2 stroke engine)
- 03 - Spark plug fires every other revolution  
(Typical single cylinder 4 stroke engine)
- 04 - Hour meter mode, RPM will not be shown



2015 ENM Co.®

#### LIMITED WARRANTY

ENM Company resettable electromechanical counters are warranted to the consumer to be free from defects in material and workmanship for a period of 1 year. All ENM products which fall within the warranty period due to defects in material or workmanship will be repaired or replaced, at ENM's option, without charge to the consumer when returned with proof of purchase to any authorized ENM dealer in the United States, transportation charges prepaid, provided there is no evidence of improper installation, tampering, or other abuse. All implied warranties, including any implied warranty of merchantability or fitness for a particular purpose, shall be limited in duration to the express warranty period specified above. ENM disclaims any liability for consequential damages due to breach of any written or implied warranty on its products. Datasheet information subject to change.

# Tach / Hour Meter

Use For : Motorcycle, ATV, Snowmobile  
Boat, Generator

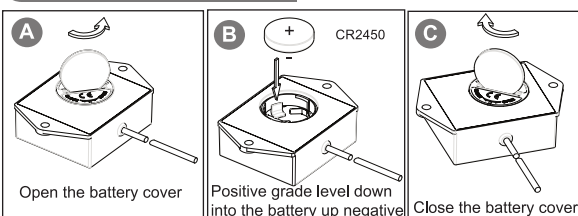
Waterproof Battery Replaced LCD Backlight

## NOTE:

This manual is a **C:Full-featured** version, please be selected according to the actual product version, with special attention A: **Normal** B: **Standard**

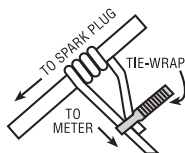
**INTRODUCTION:** THE ENGINE MONITOR is a self powered LCD Hour meter, Tachometer and Maintenance Meter. An internal lithium battery furnishes the power for the monitor. A wire around the spark plug wire of the engine provides both a tachometer signal and an indicator that the engine is running. The maintenance meter is used to alert maintenance personnel that a time interval has expired and maintenance should be performed on the engine. Before changing any settings to the ENGINE MONITOR, ensure that the engine is off.

## 1 How to install the battery



## 2 Installation

Unpack and attach the unit to a location where it can be easily read. Wrap 3 or 4 turns of the wire around the engine's spark plug wire. The LCD will display the accumulated hours on the hour meter and HOURS icon.



## 3 Activate Product

- After installing the battery is complete, press the S1 and S2 button, the LCD screen will start displaying 00000 99999 until the end, after two seconds, the LCD screen will turn off
- Press S1 or S2 button again to activate the meter; or when the engine is started automatically activate the meter, then the meter LCD screen will light up

## 4 How to turn the backlight

- After installing the battery is complete, press the S1 or S2 button, the LCD screen backlight will turn on, after 2 seconds the backlight will automatically turn off
- Product during use by S1 or S2 button to turn on the backlight, after 2 seconds the backlight will automatically turn off.

## 5 How to use the meter

### 1 TO SET THE TACHOMETER (SPARK PLUG FIRING REVOLUTION):

Press and hold the S1 button for 4 seconds. The LCD will display 01 (spark plug fires twice per revolution), 02 (once per revolution), 03 (every other revolution), 04 (hour only, will not display RPM). Once you find your desired spark plug firing pattern, release the S1 button. The LCD will blink for 8 to 10 seconds and return to total hour meter mode. The default for the standard model is 02 (once per revolution).

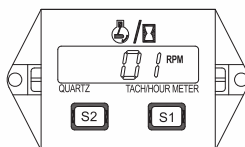
**Note:** 01-2P1R 02-1P1R 03-1P2R

Under normal circumstances, 2 cylinder 4 stroke, single cylinder 2-stroke engine set 02 (1P1R)

Under normal circumstances, single cylinder 4-stroke engine set 03 (1P2R)

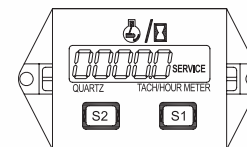
Under normal circumstances, 4-cylinder 4-stroke, 2 cylinder 2 stroke engine set 01 (2P1R)

When some special single cylinder 4-stroke engine when set 03 (1P2R) data is not accurate, please try to 02 (1P1R)



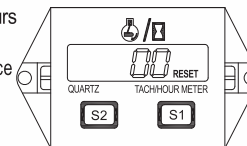
### 2 TO SET THE MAINTENANCE INTERVAL TIMER:

Press and hold down the S2 button for 4 seconds. The right most digit on the LCD will flash and the SERVICE icon will be displayed. Pressing and holding the S1 button will cause the flashing digit to automatically increment. When the desired number has been reached release the S1 button and press the S2 button for 1 second to increment to the next digit. Repeat above steps until the service time interval has been entered. After 14-16 seconds, no buttons pressed, the LCD display will return to total hours mode.



### 3 ACTIVATING THE MAINTENANCE INTERVAL TIMER:

Press and hold the S1 and S2 button simultaneously for 4 seconds. The two digits will increment to 09 seconds and then return to total hours mode. When the engine is running and the maintenance time has reached zero, the service icon will come on.

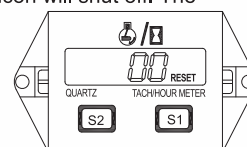


### 4 VIEWING MAINTENANCE INTERVAL:

Press and hold the S2 button for 4 seconds to view remaining time of your maintenance interval. To continue current maintenance do nothing. If you would like to start a new maintenance interval repeat steps 4 and 5 again. Each time you want to view the remaining time of your maintenance press and hold S2.

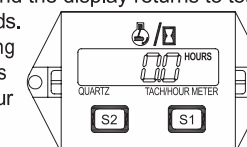
### 5 RESETTING THE SERVICE ICON:

Press and hold the S1 and S2 buttons for 20 seconds. The service icon will shut off. The maintenance time will automatically default to the number previously programmed.



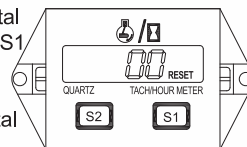
### 6 TO DISPLAY HOURS ONLY:

Press and hold the S1 button until 04 is displayed. Release the S1 Button and the display returns to total hours after 8 to 10 seconds. When the engine is running the display will show hours only, no RPM and the Hour Icon will blink.



### 7 TO RESET TOTAL HOURS AND MAINTENANCE TIME :

Press and hold the S1 button until 05 is displayed. Release the S1 button and after 8 seconds the display will return to total hours. Press and hold S1 and S2 simultaneously for 20 seconds and the meter will perform a total reset.



### 8 LCD SCREEN AUTOMATICALLY TURNS OFF

- When the product is in working condition (the engine is turned on), the display will remain in the display.
- When the engine is stopped, about two minutes after the display screen automatically turns off, the product enters the standby state. (The goal is to conserve power)
- When the screen is off state, press the S1 or S2 button, or re-start the engine, the LCD screen will automatically light up.

## 6 Product Series

### There are three types of the product

- A: **Normal**---Battery not replaceable  
B: **Standard**---Battery can be replaced, no backlight  
C: **Full-featured**---Battery can be replaced with backlight function  
**Please contact the dealer at the time of purchase, please select the type you see fit.**



## 7 Specifications

Hours Range : 99999H  
Hours Accuracy : 0.1H  
RPM Range : 300~30000rpm  
RPM Accuracy : 10rpm  
Battery : CR2450  
Battery Life : about 2 years  
LCD Size : 12.5×42 mm  
Waterproof : IP65  
Weight : about 70g  
Product Size : 73.5×47×20 mm

